

PRODUCT RANGE

DUCT FANS WITH CIRCULAR CONNECTIONS

UNINSULATED



CK

CK is a duct fan with circular connection. It is compact with high capacity and efficiency, with low sound levels.

CK is available with either AC or EC motor. Impeller with backward curved blades.

Easy installation in any position.

Air Flow up to 1800 m³/h (0.52 m³/s).



BFC

BFC is a range of uninsulated duct fans with circular connection. The BFC is very compact, with only slightly larger dimensions than the duct.

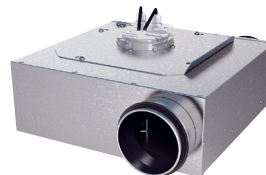
The fan has high capacity and high efficiency.

Fan housing is manufactured from galvanized sheet steel. The fan can be installed outdoors or in damp environments.

BFC is available with AC motor or EC motors.

Easy installation in any position.

Air flows up to 19080 m³/h (5.3 m³/s).



LPKB

The LPKB is a low profile duct fan with circular connection and has proven performance and reliability. A very small and useful duct fan which is perfect for spaces with minimum height clearance. It has high capacity and efficiency with low sound levels.

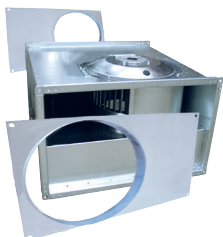
LPKB is available with either AC motor or EC motor. Impeller with backward curved blades.

Swing-out design as standard makes the fan easy to maintain and clean.

The mounting brackets simplify installation in any position.

Airflows up to 1600 m³/h (0.45 m³/s).

UNINSULATED



RKC

The RK is converted to a RKC by using a RK-Kit. Designed to cope with high pressure and long ducts.

RKC is available with AC motor. Impeller with forward curved blades.

Swing-out design as standard makes the fan easy to maintain and clean.

Easy installation in any position.

Airflows up to 9100 m³/h (2.50 m³/s).

SOUND ATTENUATED



LPKB Silent

LPKB Silent is similar to the LPKB. LPKB Silent is equipped with a built in silencer on the inlet side for an even lower sound level.

LPKB Silent is available with either AC motor or EC motor. Impeller with backward curved blades. Swing-out design as standard makes the fan easy to maintain and clean.

The mounting brackets simplify installation in any position.

Airflows up to 1600 m³/h (0.45 m³/s).



CAU, IFA, IFK, LPKB

These four types have multiple inlets.

The **CAU** is equipped with insulation on bottom and inlet side. Features 3 inlets and 1 outlet which makes it a highly flexible duct fan suitable for many applications.

IFA is suitable for installation in a cupboard or attic. It is equipped with 30 mm insulation and features 3 inlets and 1 outlet allowing multi function applications.

The **IFK** is designed as a cooker exhaust fan and can be connected to a cooker hood. Handles high pressures yet offer low sound levels.

The **LPKB** is uninsulated and equipped with two connection at inlet side. It is very small and perfect for spaces with minimum height clearance. It is equipped with 30 mm fire retardant insulation.

All four types are available with AC motor and impeller with forward curved blades.

Swing-out design as standard makes the fans easy to maintain and clean.

INSULATED



IRB

Equipped with 50 mm thermal and acoustic insulation, the IRB is ideal for handling cold air. Designed for high pressure and long, complicated duct runs. The design prioritizes functionality, durability and lifetime.

IRB is available with either AC or EC motor. Impeller with backward curved blades.

Swing-out design as standard makes the fan easy to maintain and clean.

When duct connected the fan can be installed outdoors or in damp environments.

Airflows up to 10800 m³/h (3.00 m³/s).



IRE

Equipped with 50 mm thermal and acoustic insulation, the IRE is ideal for handling cold air. Designed for high pressure and long, complicated duct runs. The design prioritizes functionality, durability and lifetime.

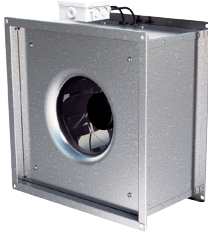
IRE is available with AC motor and some models with EC motor. Impeller with forward curved blades. Swing-out design as standard makes the fan easy to maintain and clean. When duct connected the fan can be installed outdoors or in damp environments.

Airflows up to 8200 m³/h (2.30 m³/s).

PRODUCT RANGE

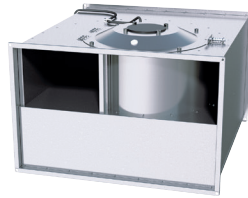
DUCT FANS WITH RECTANGULAR CONNECTION

UNINSULATED



BFS

The BFS has high capacity and very good efficiency. Impeller with backward curved blades. Fan housing is manufactured from galvanized sheet steel. The fan is intended to be installed in a duct system. When duct connected the fan can be installed outdoors or in damp environments. Easy installation in any position. BFS is available with AC motor or EC motor. Air flows up to 19080 m³/h (5.3 m³/s).



RK

The RK has proven performance and reliability. Designed to cope with high pressure and long ducts. RK is available with AC motor. Impeller with forward curved blades. Swing-out design as standard makes the fan easy to maintain and clean. Easy installation in any position. Airflows up to 9100 m³/h (2.50 m³/s).



RKB

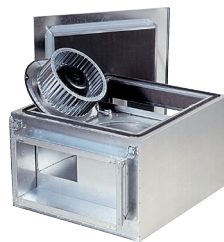
The RKB is compact with high capacity and very good efficiency. RKB is available with either AC or EC motor. Impeller with backward curved blades. Swing-out design as standard makes the fan easy to maintain and clean. Easy installation in any position. Airflows up to 14100 m³/h (3.90 m³/s).

INSULATED



IRB

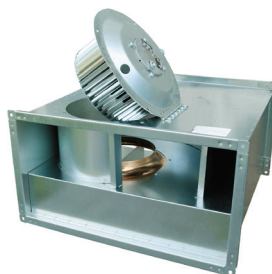
Equipped with 50 mm thermal and acoustic insulation, the IRB is ideal for handling cold air. Designed for high pressure and long, complicated duct runs. The design priorities functionality, durability and lifetime. IRB is available with either AC or EC motor and Impeller with backward curved blades. Swing-out design as standard makes the fan easy to maintain and clean. When duct connected the fan can be installed outdoors or in damp environments. Airflows up to 13000 m³/h (3.70 m³/s).



IRE

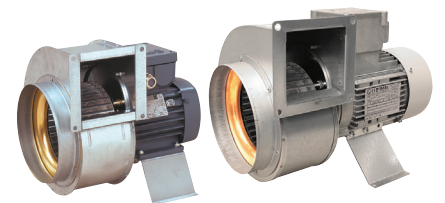
Equipped with 50 mm thermal and acoustic insulation, the IRE is ideal for handling cold air. Designed for high pressure and long, complicated duct runs. The design priorities functionality, durability and lifetime. IRE is available with AC motor and impeller with forward curved blades. Swing-out design as standard makes the fan easy to maintain and clean. When duct connected the fan can be installed outdoors or in damp environments. Airflows up to 8200 m³/h (2.30 m³/s).

EXPLOSION PROOF FANS



RKX

RKX is a duct fan with rectangular connection which is a refinement of our RK range. Swing-out design as standard makes the fan easy to maintain and clean. The non-sparking inlet cone is made from copper and the engine is an ATEX-approved outer rotor motor. Airflows up to 4800 m³/h (1.30 m³/s).



RFTX, RFEX

The RFTX and RFEX range of radial fans complies with ATEX standards. RFTX uses 3-phase motors and RFEX uses 1-phase motors. The non-sparking inlet cone is made from copper and the motor is separated from the air stream. RFTX and RFEX are available with AC motor. Airflows up to 1800 m³/h (0.50 m³/s).

ATEX-CERTIFIED FANS

The technical standard for explosion proof fans is called ATEX. These fans provide a non-sparking performance, powered by a high quality motor. This makes these fans a safe choice for a number of different applications within the industry.

ROOF FANS, WALL FANS, RADIAL FANS

ROOF FANS



TKC/TKS, TKV/TKH

There are three different versions of our roof fans. TKC and TKS are the same type of fan, with the difference that the TKC has a circular connection, while the TKS has a square one. While the outlet on TKC and TKS are horizontal, the TKV/TKH fans have vertical or horizontal outlet and square connection.

The roof fans are available with either AC or EC motor. Impeller with backward curved blades. The roof fans offer simple mounting on roof curbs. All fans are equipped with swing-up design as standard which makes the products easy to maintain and clean.

Airflows up to 17000 m³/h (4.80 m³/s).

WALL FANS



CV, KV, RS

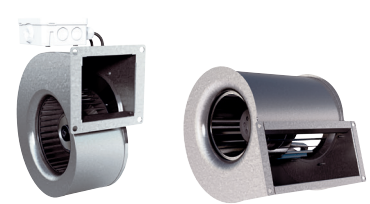
The CV and KV are two ranges of wall mounted fans in six different sizes, each containing two different capacities. The KV has a square backing plate, while the CV has a circular backing plate. This variety combined with ease of positioning allows a wide variety of applications including use in damp and humid environments.

The RS are a range of exhaust fans designed for mounting on outdoor walls. The casing are manufactured from painted galvanized steel for higher durability.

The wall fans are available with AC motor or EC motor. Impeller with backward curved blades.

Airflows up to 1700 m³/h (0.47 m³/s).

RADIAL FANS



RF, DF

The radial fans is a family of compact fans intended for the OEM market. They have high capacity and low sound levels. They are ideal for use in heat exchangers, dehumidifiers and air cleaners.

The RF have a single inlet while the DF have double inlets, both with AC motor and impeller with forward curved blades. A few are equipped with EC motor.

Airflows up to 8200 m³/h (2.28 m³/s).



MECHANICAL ACCESSORIES

Silencers, filters and filter boxes, along with duct products such as safety grills and louvre shutters.



ELECTRICAL ACCESSORIES

Transformers, regulators, timers, controllers and sensors.

ACCESSORIES



Not only allergies. Studies show that there is a direct connection between our ability to concentrate and the quality of the air.

ENERGY EFFICIENT VENTILATION!

Our range of fans includes products for most kinds of applications. They are available with either AC or EC motors. The external rotor motor has maintenance-free sealed ball-bearings and the product casing is made from rigid galvanized steel sheet.

Quality has always been an essential part of H. Östberg AB. The company is certified according to the quality and environment standards ISO 9001 and ISO 14001.

These high demands guarantee an efficient and rational production of high standard fans. All our fans are tested before delivery, which gives us a 100% control of the production.

The quality of air directly affects the way we feel, not only physically but also spiritually. Therefore use Östberg quality products in order to achieve a healthy indoor climate with energy efficient ventilation.



This product is compliant with the Lot 11 directive (327/2011) and approved for use in the EU and EFTA.



This product is compliant with the Lot 6 directive (1253/2014) and approved for use in the EU and EFTA.



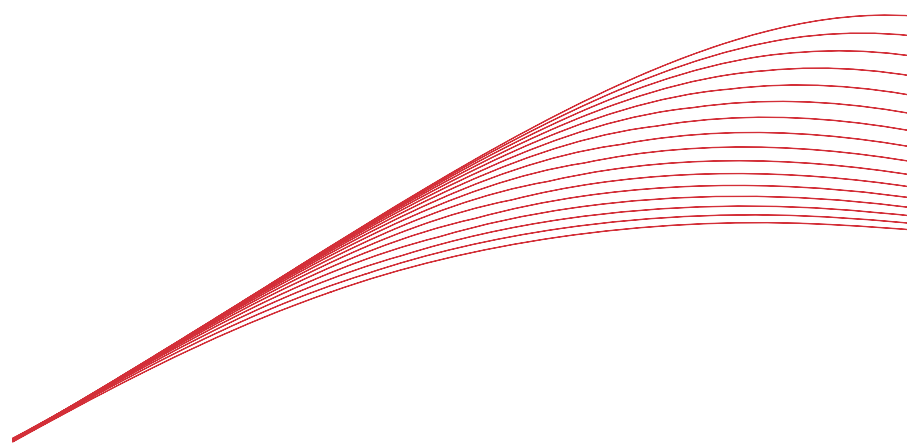
This product is compliant with the Lot 6 directive (1253/2014) and approved for use in the EU and EFTA, also after 2018.



Product with EC-motor.



Product with AC-motor.



Östberg is one of the leading manufacturers of fans in the world.

In the early 1970s the founder and owner of the company designed the first circular and rectangular in-line radial duct fan with external rotor motor and straight-through airflow (180°) in the history.

We have continued to develop new products and today we offer a wide product range of centrifugal in-line duct fans, roof fans, wall fans and energy recovery units.

Our goal is to always offer highest quality products at competitive prices.

ÖSTBERG 

H. ÖSTBERG AB

Box 54, SE-774 22 Avesta, Sweden

Phone: +46 226 860 00

Fax: +46 226 860 05

E-mail: info@ostberg.com

www.ostberg.com